

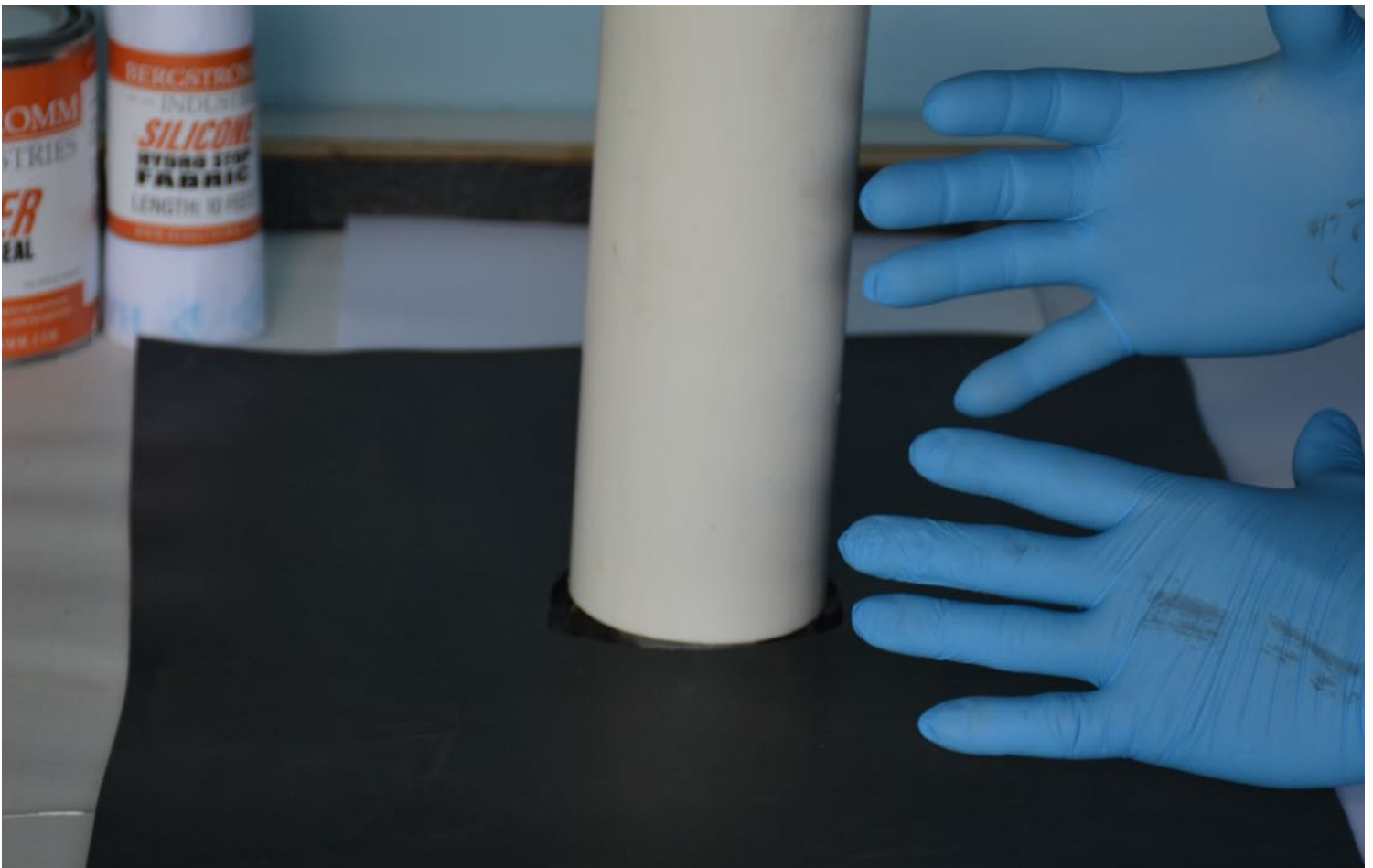
Super Silicone Seal

Application Guide



Flashing detail to a vent pipe

Always use gloves when working
with chemicals



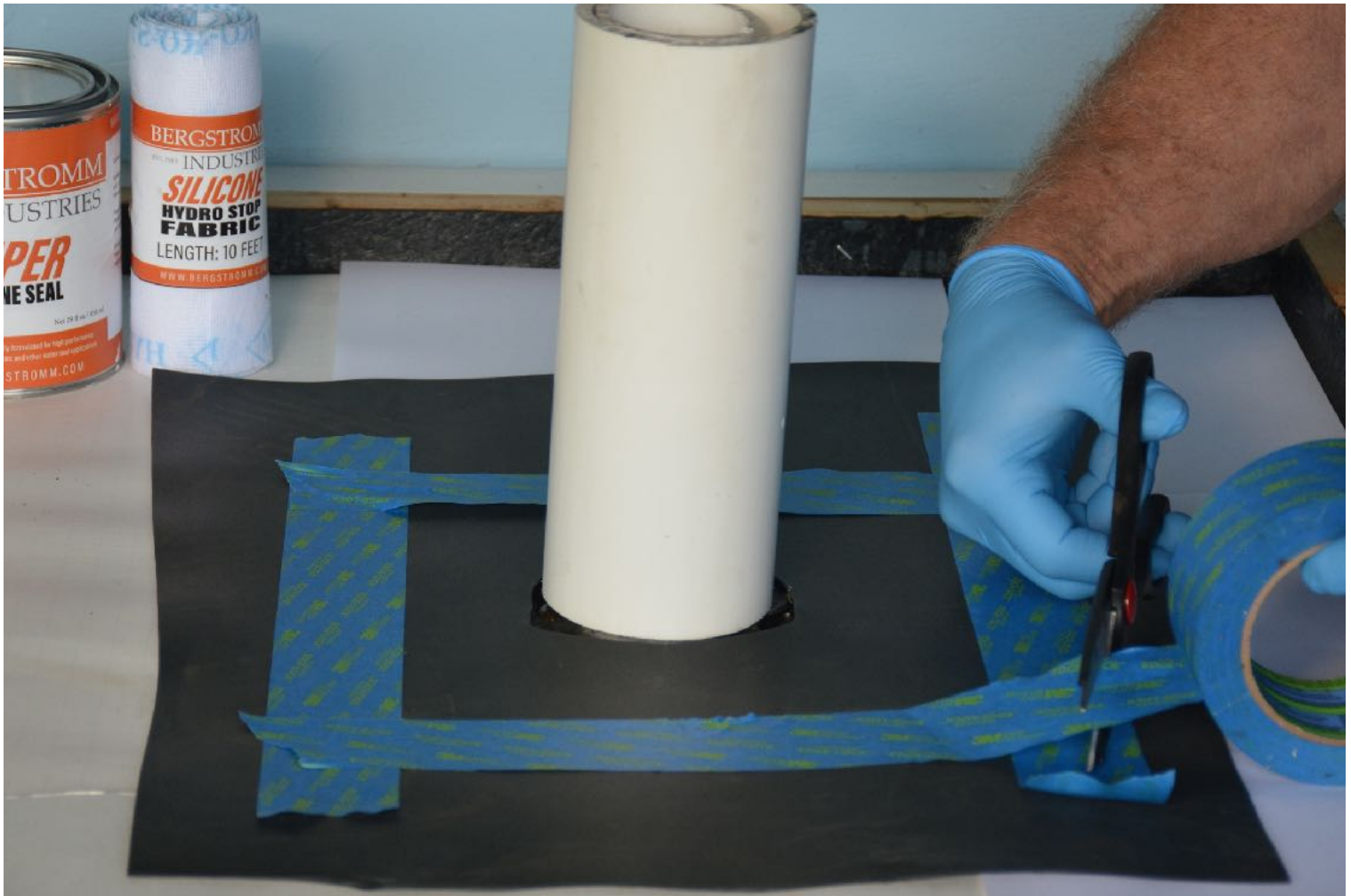
Make sure all surfaces are clean
from grease and dust using



Lacquer Thinners

- Sand smooth surfaces with 120 grid sand paper to create a rough surface

Tape off the area where Super Silicone Seal will be applied too

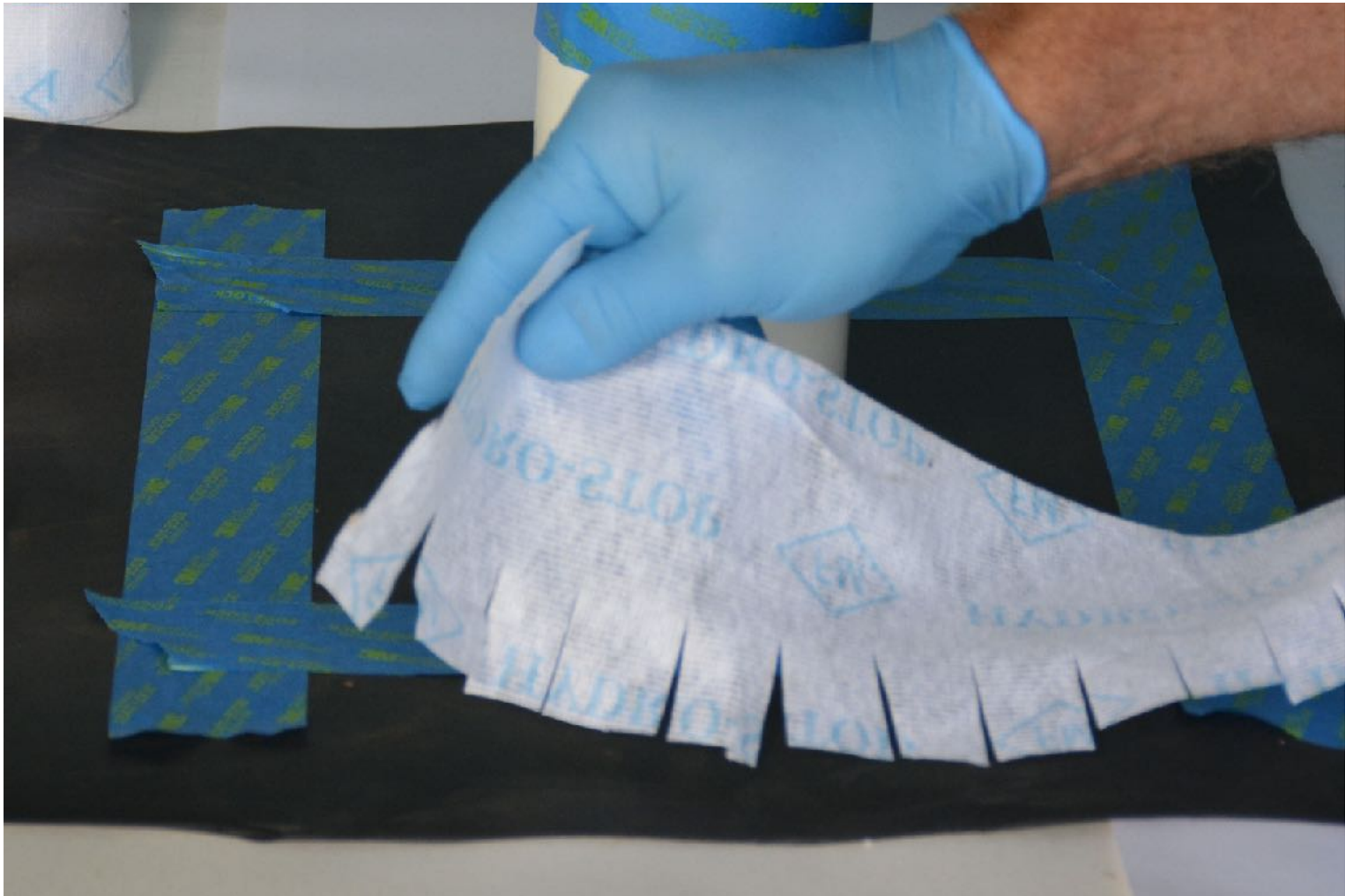


Measure and cut the correct size of Poly Fleece



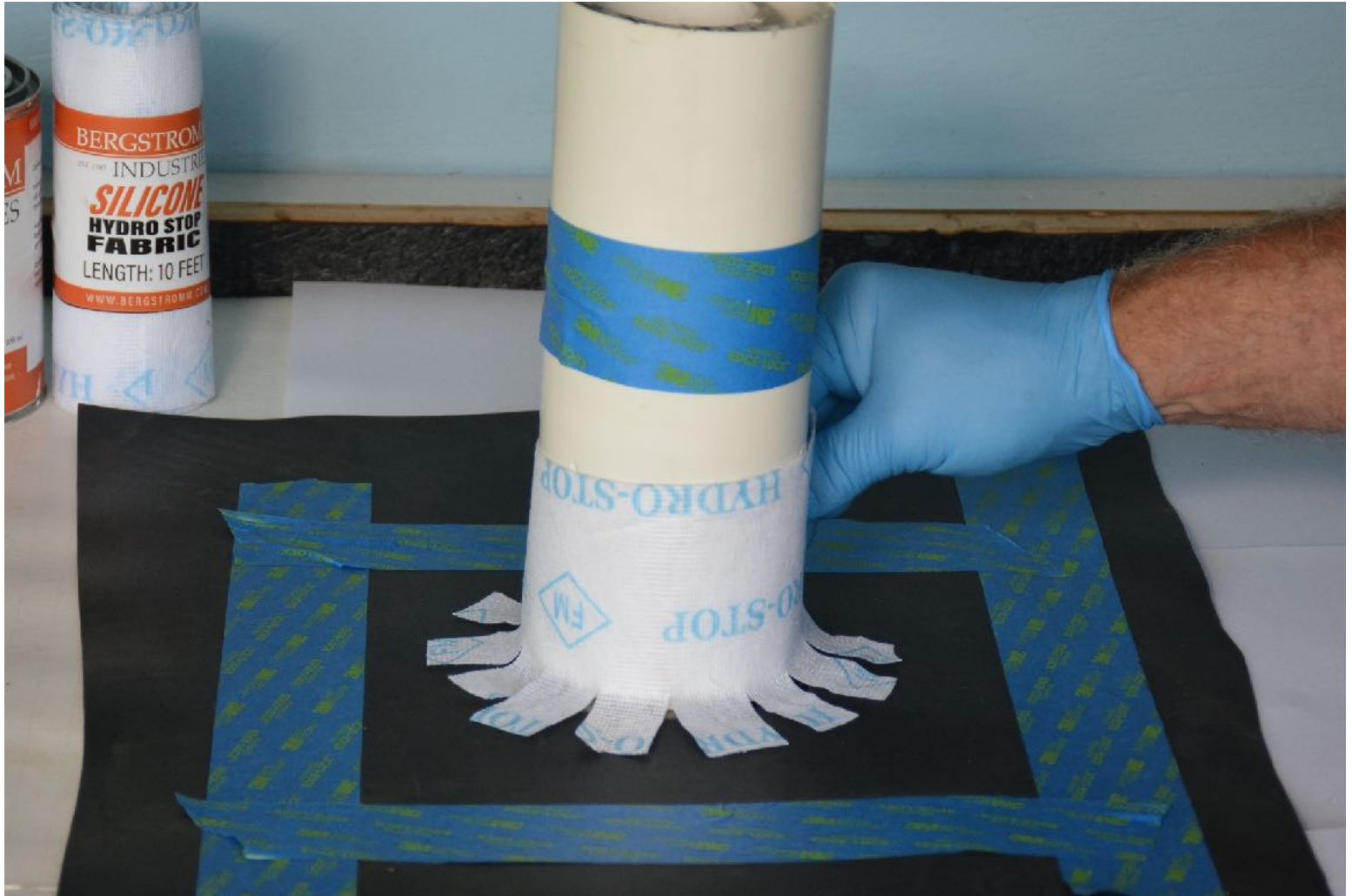
- Sand the PVC pipe or any other surface to create a rough surface for better bonding
- Overlap each end of the polyester fleece with approximately one inch

Cut tabs approximately every 3/4"
wide by 1 1/2" deep



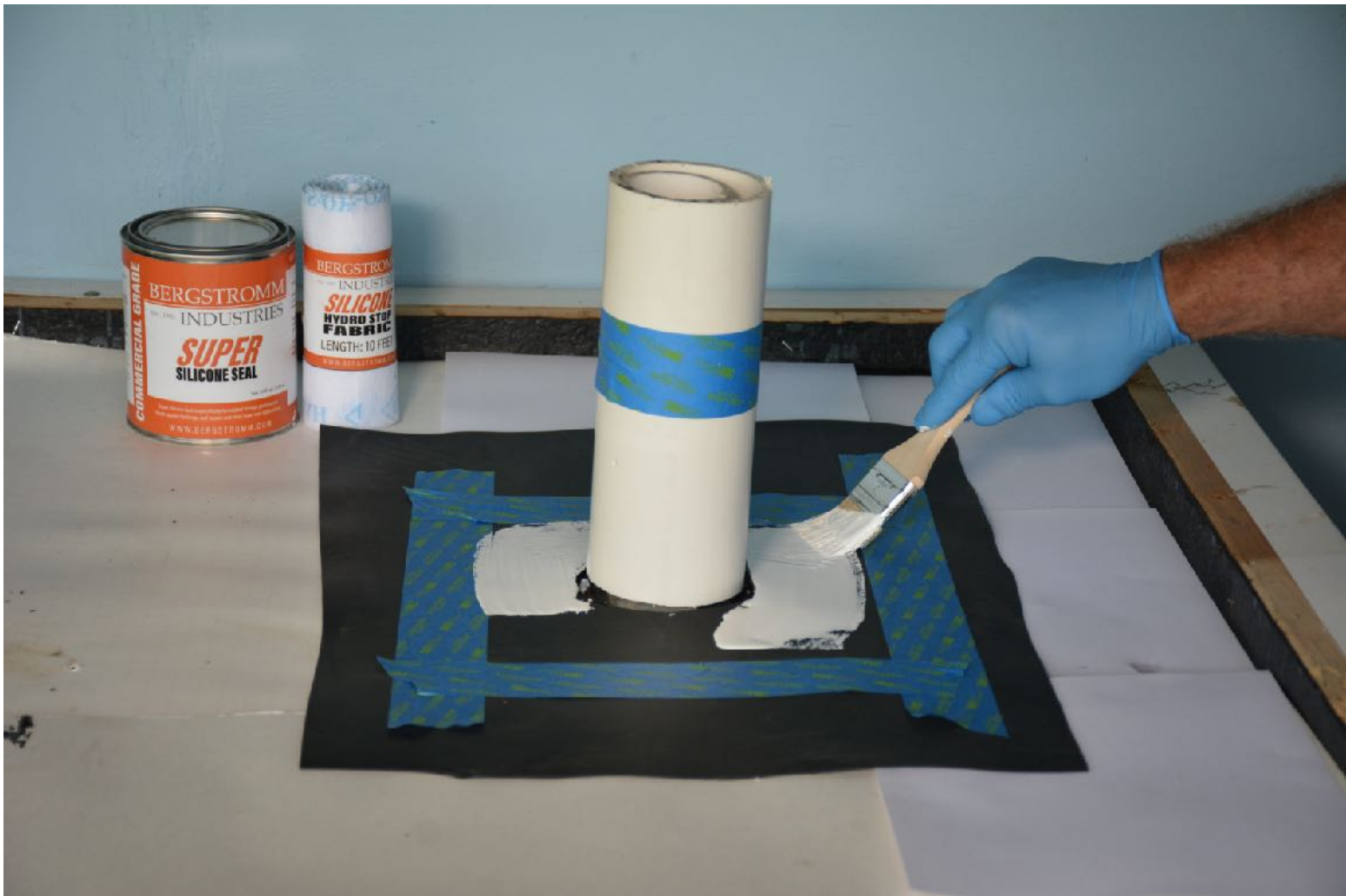
- Space the tabs evenly
- The tabs should be around 3/4' to 1" wide and approximately 1 1/2" to 2" long

Dry fit the fleece with the tabs cut



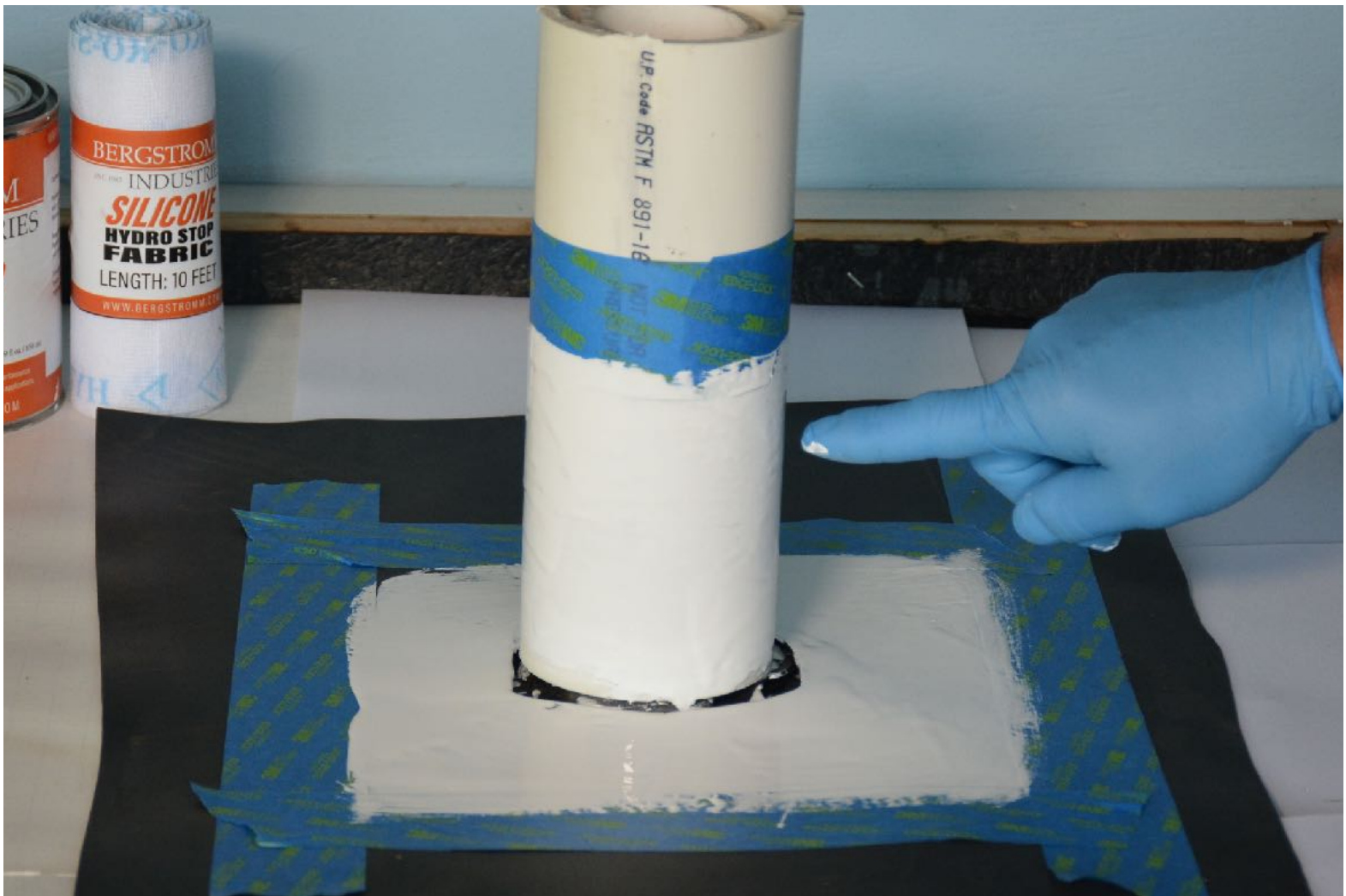
- Mark the top of the fleece and mask off approximately 1" above the fleece

Use a paint brush to apply a coat of Super Silicone Seal

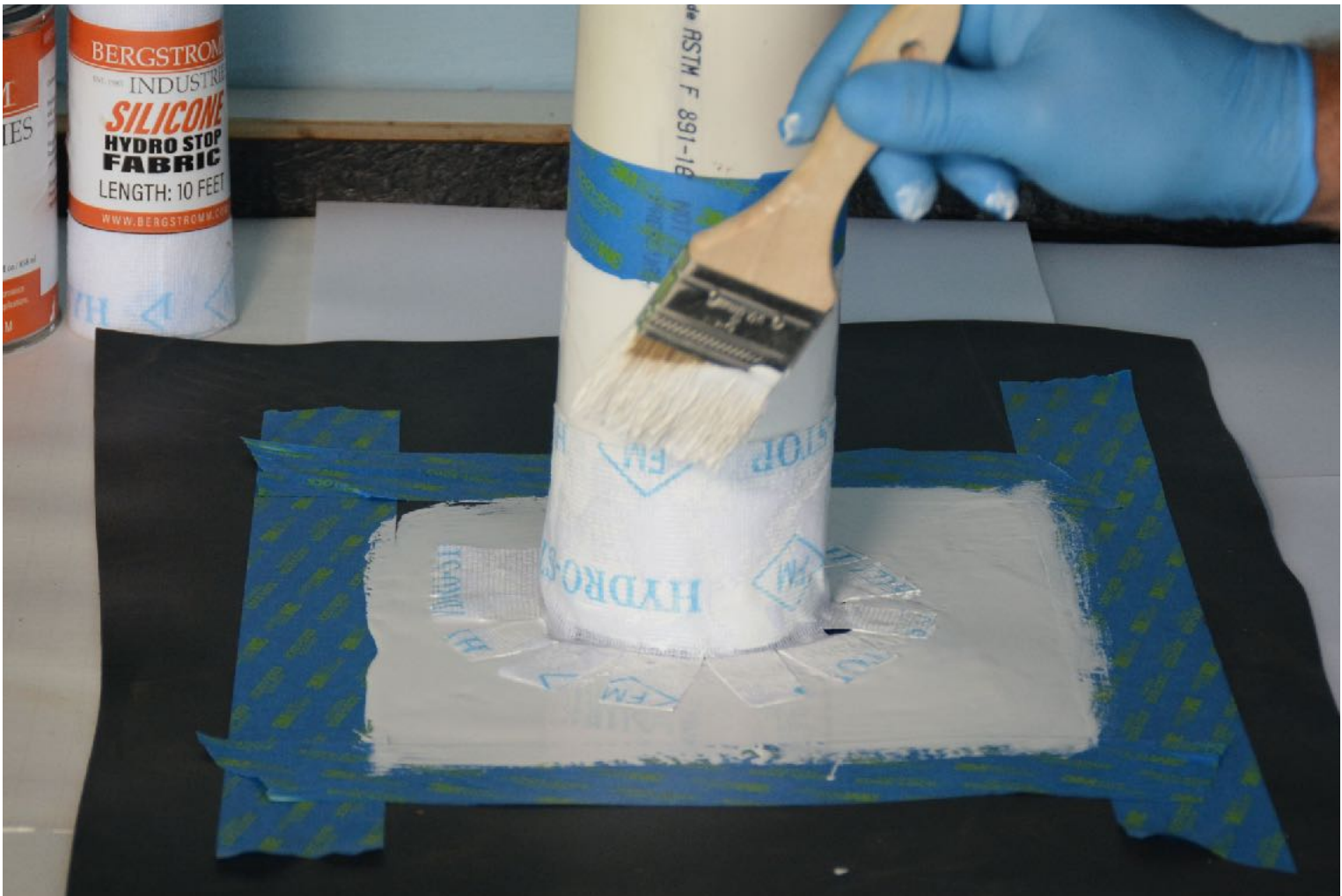


- Apply a thick coat of Super Silicone Seal to both surfaces - pipe and roofing surface

Make sure to cover all areas inside
the masking tape

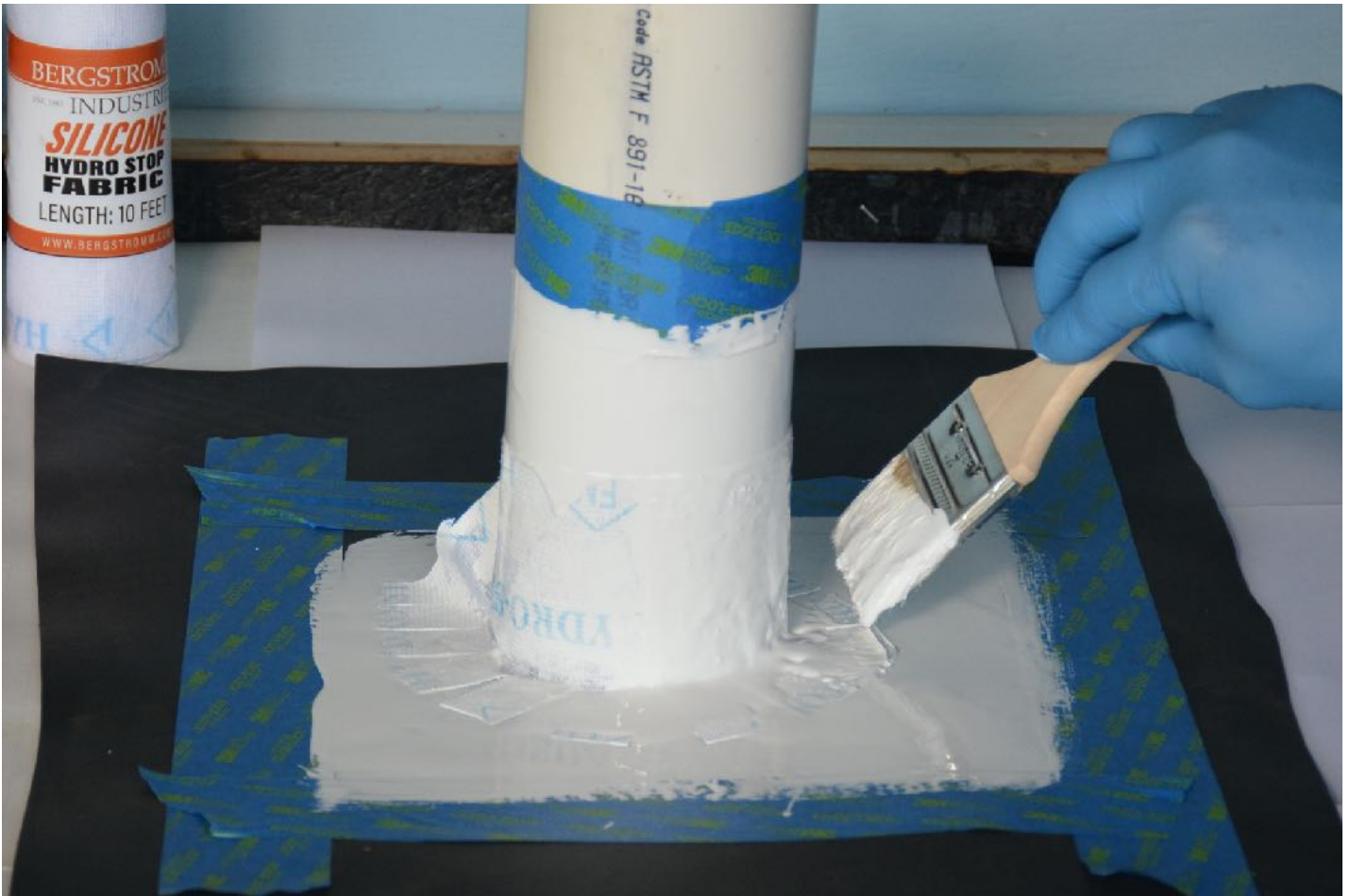


Install the pre-cut fleece with tabs to the bottom



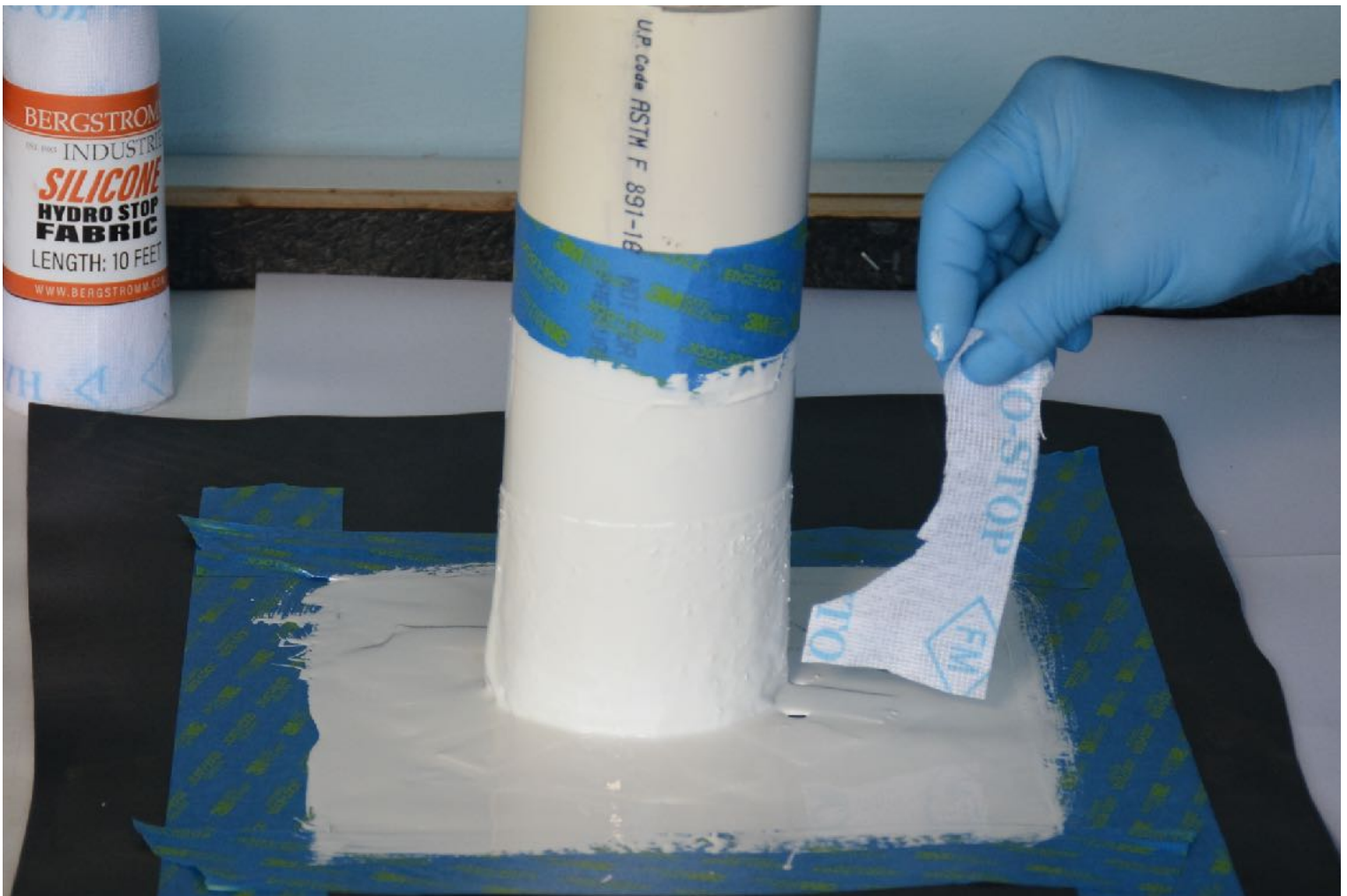
- When installing the fleece, make sure the tabs are lying flat.

Dab the fleece with the brush into the layer of Super Silicone Seal coating



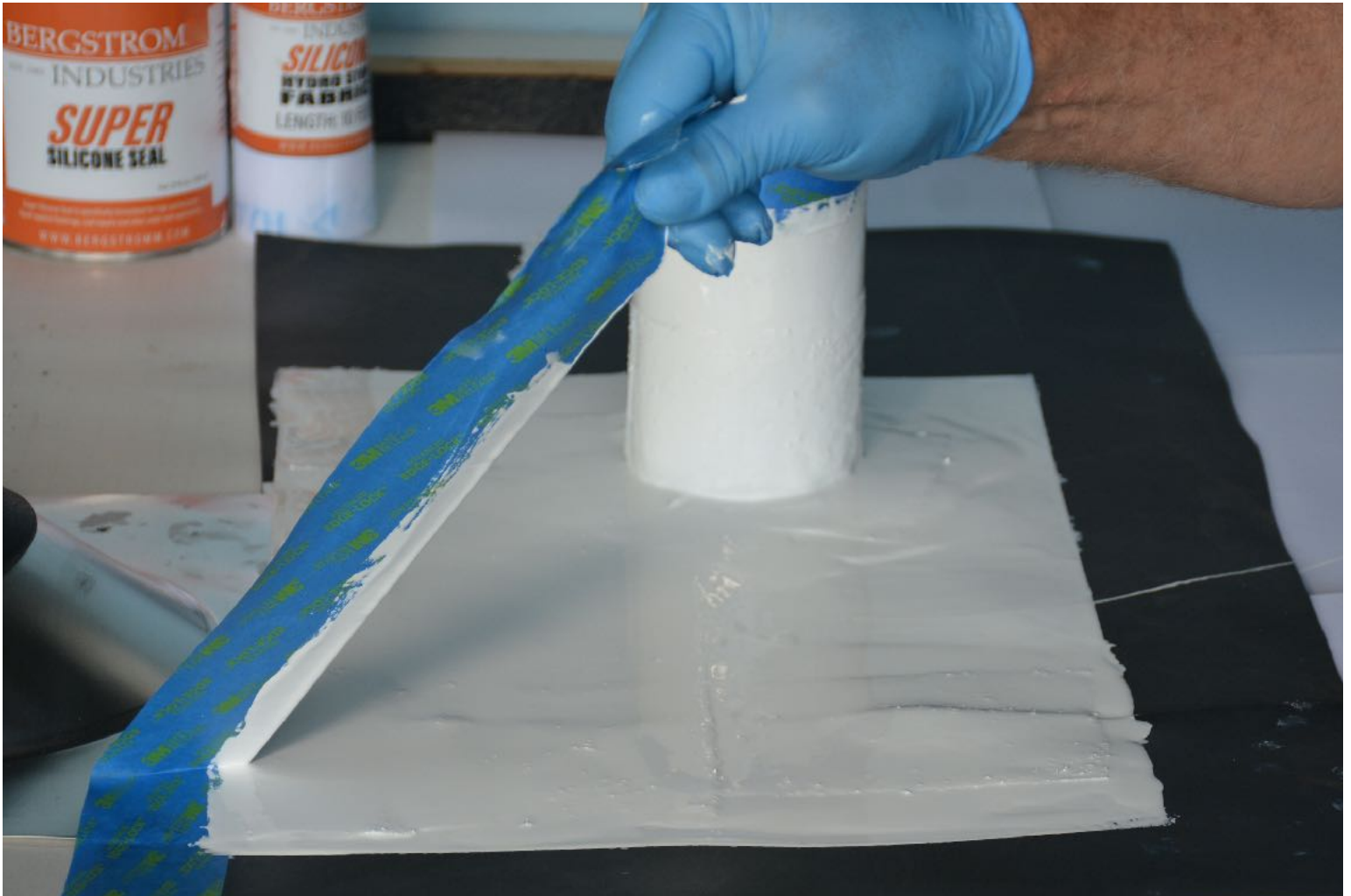
- Use the brush to push the fleece into the corner so there is no void behind the fleece
- Dab the fleece to ensure there is no air trapped

Apply a coat of Super Silicone Seal over the Fleece



- Paint a thick coat so you can't see the texture of the fleece. Put a small piece over holes
- You can always come back after it is cured and apply another coating if necessary

Remove the masking Tape



- Remove the masking tape immediately after applying the last coat

Good Job



- The Super Silicone Seal will cure over 24 hours but it can rain within 5 hours of application and it will be good
- Super Silicone Seal can be applied in temperatures of 30° F and above

Transition to metal or another membrane:

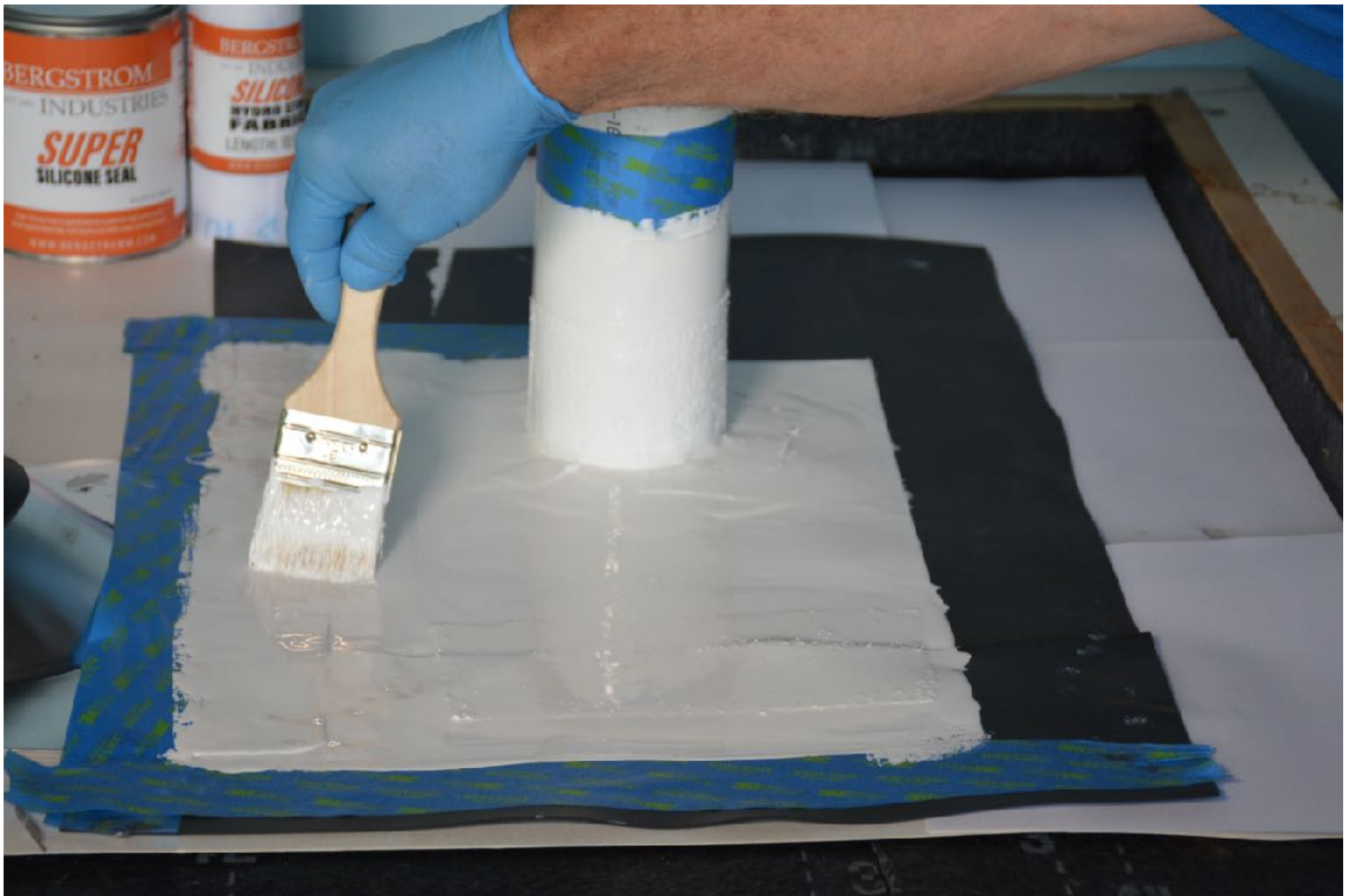
Make sure the metal flashing is
secured by nailing it down



Mask off the area where the Super Silicone Seal will be applied



Apply a coat of Super Silicone Seal in the masked off area



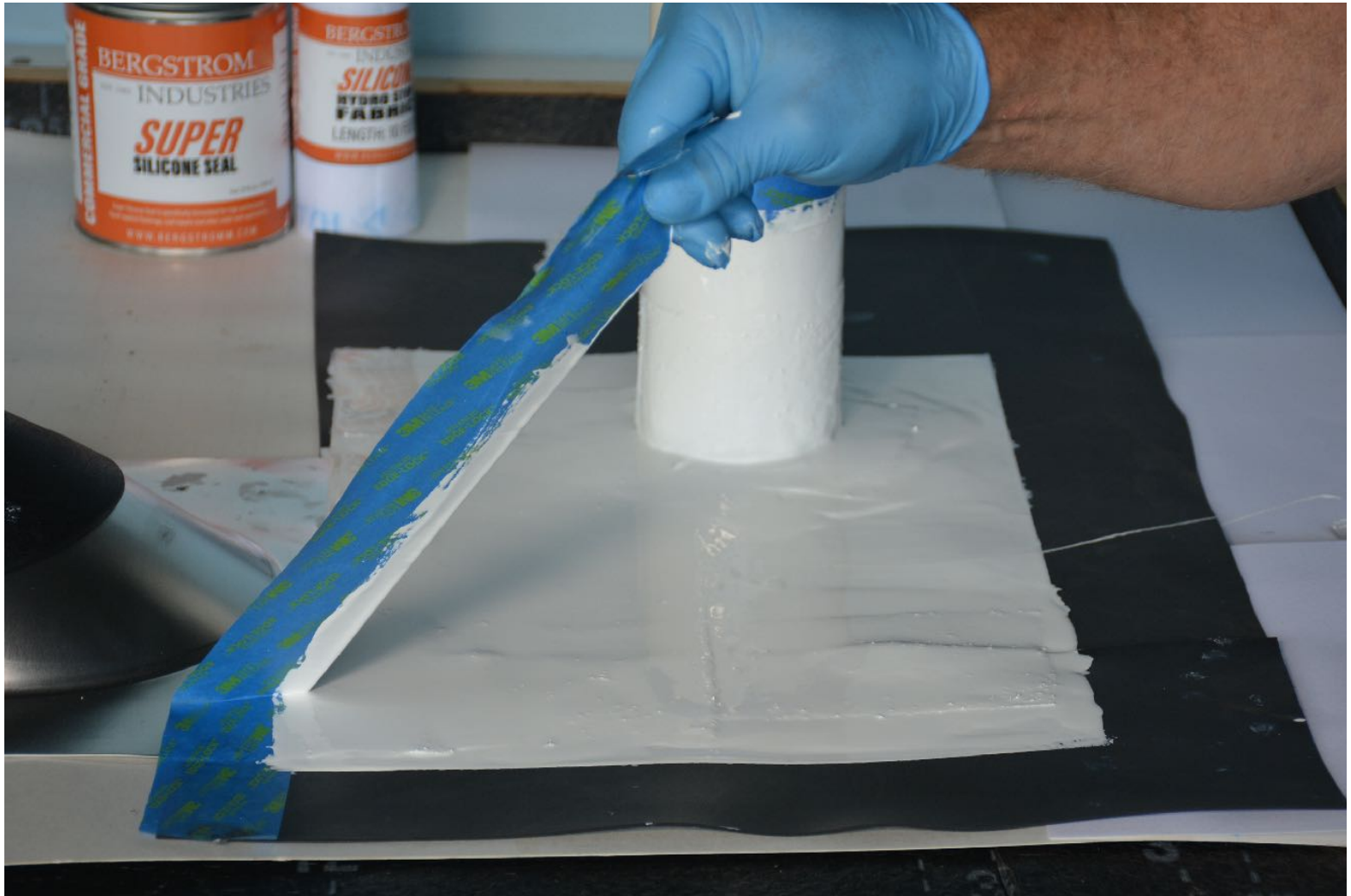
Install the Polyester Fleece and dab it with a brush to get it to stick to the Super Silicone Seal



Apply a Top coat of Super Silicone Seal over the fleece



Remove the masking tape



Job well done

